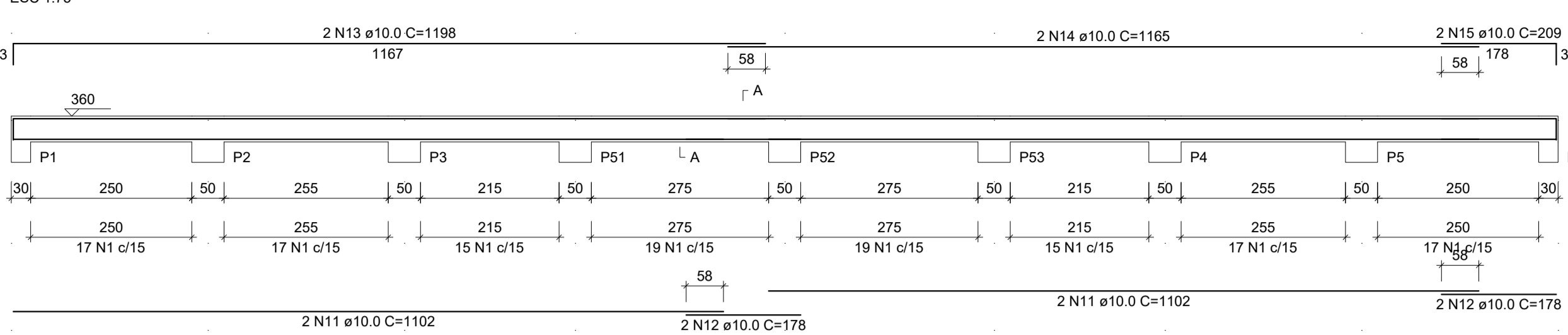
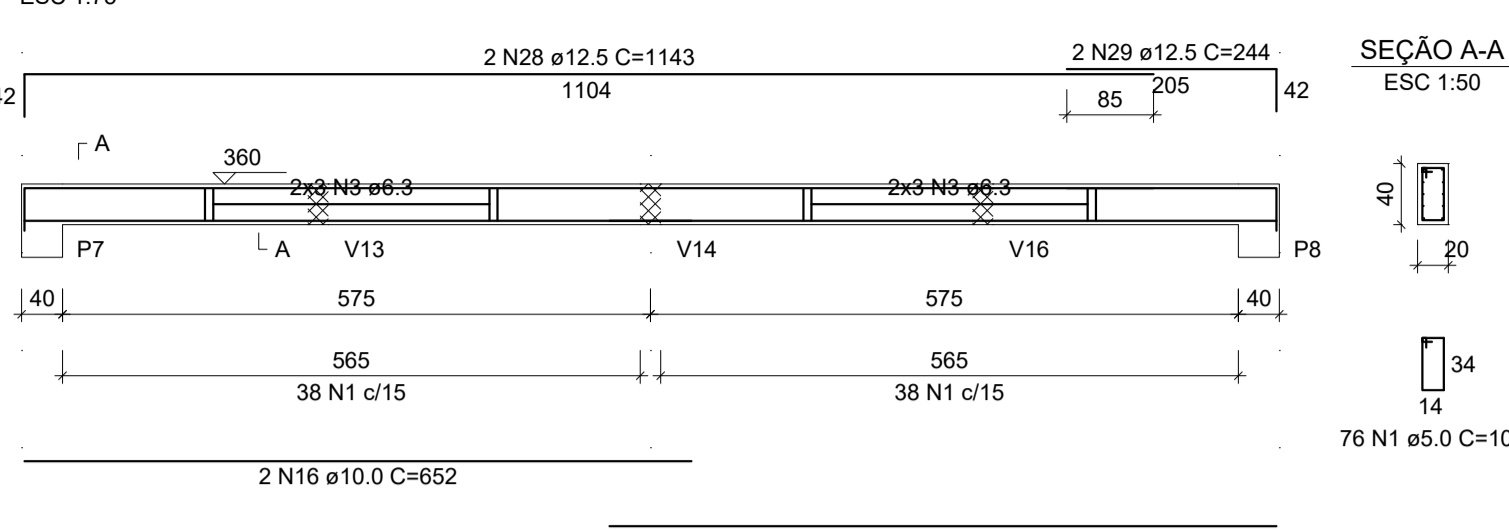


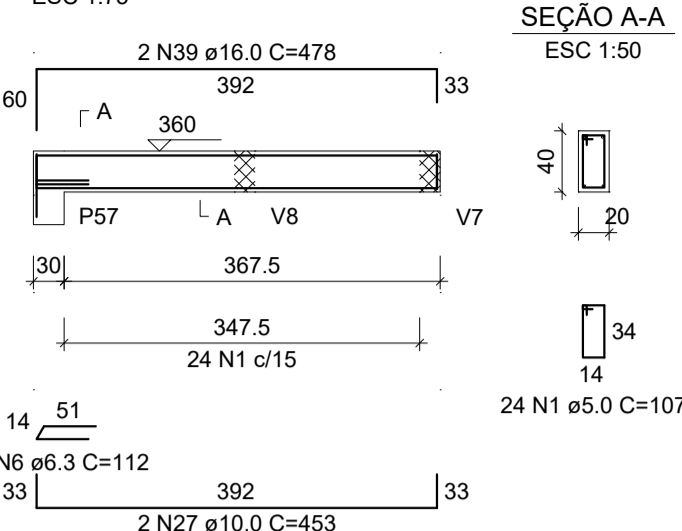
V1 (20 x 40)



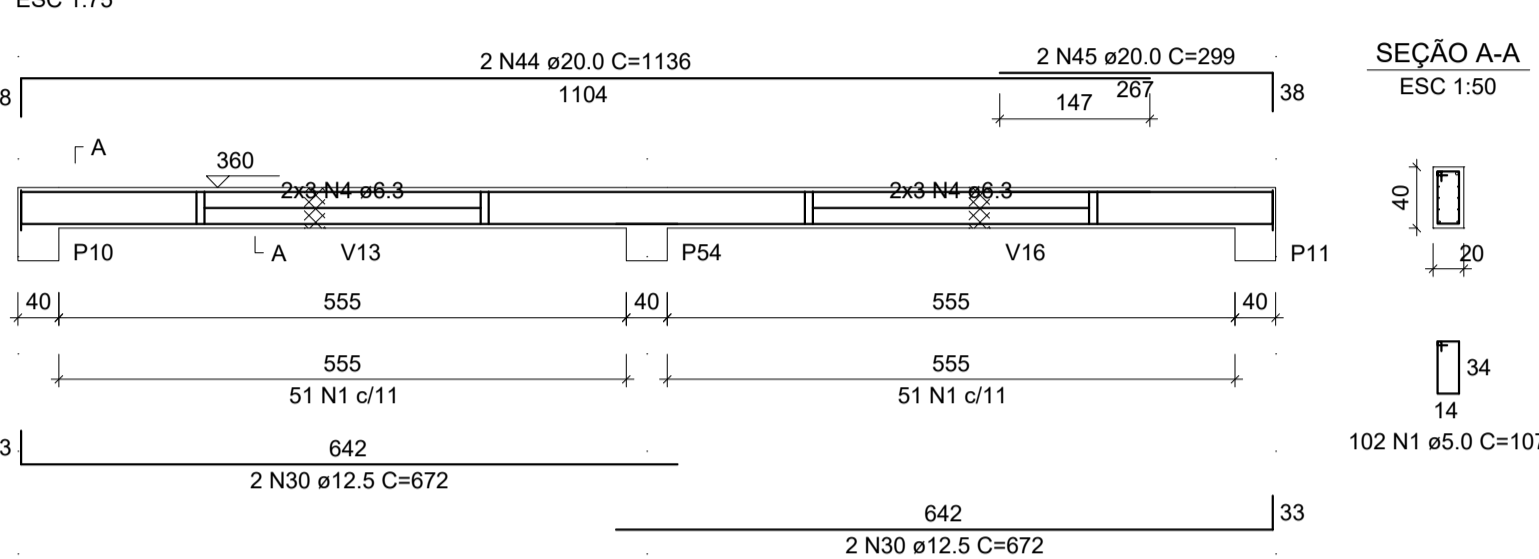
V2 (20 x 40)



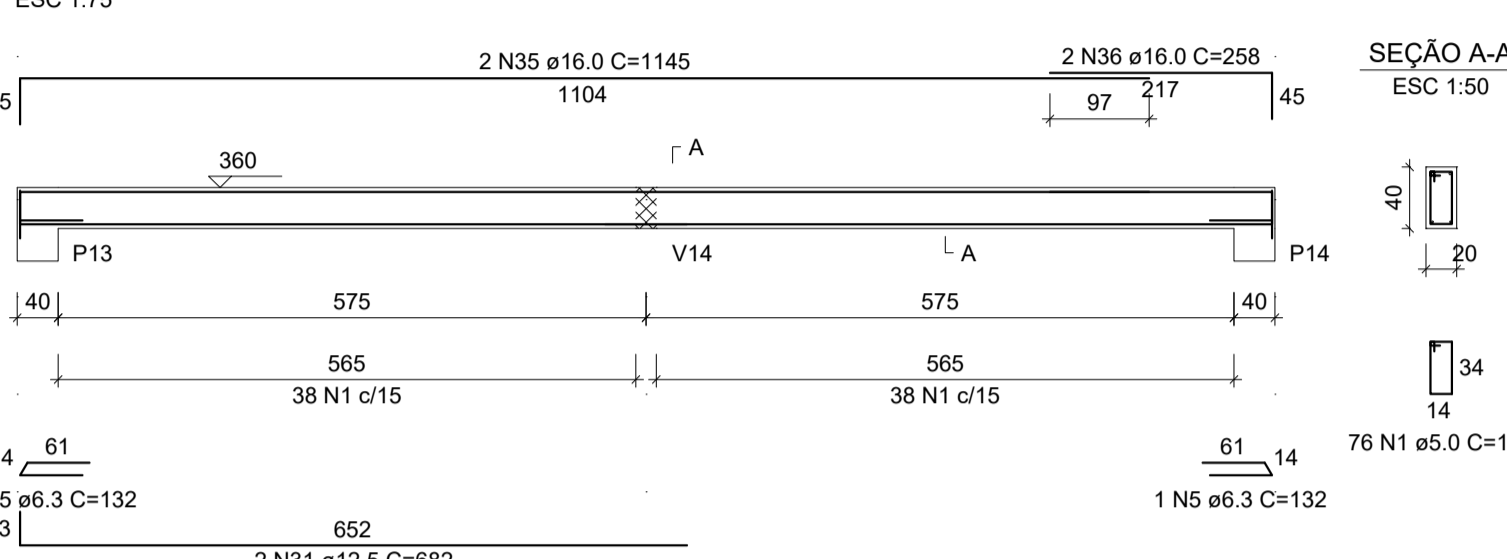
V12 (20 x 40)



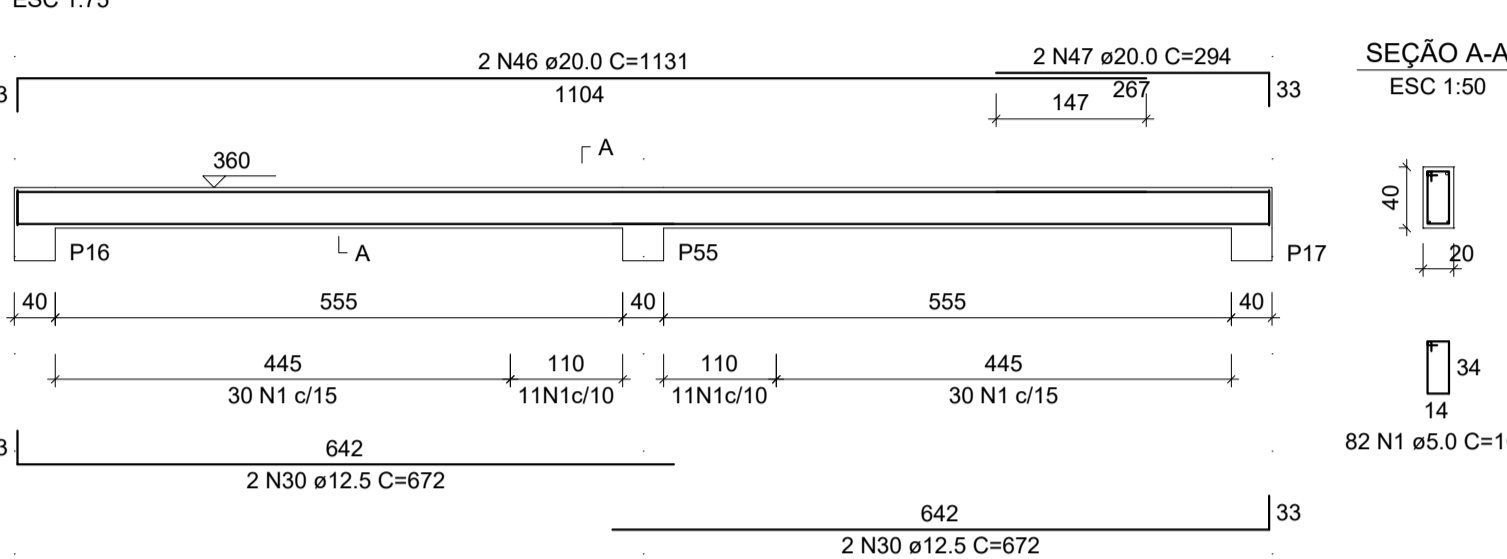
V3 (20 x 40)



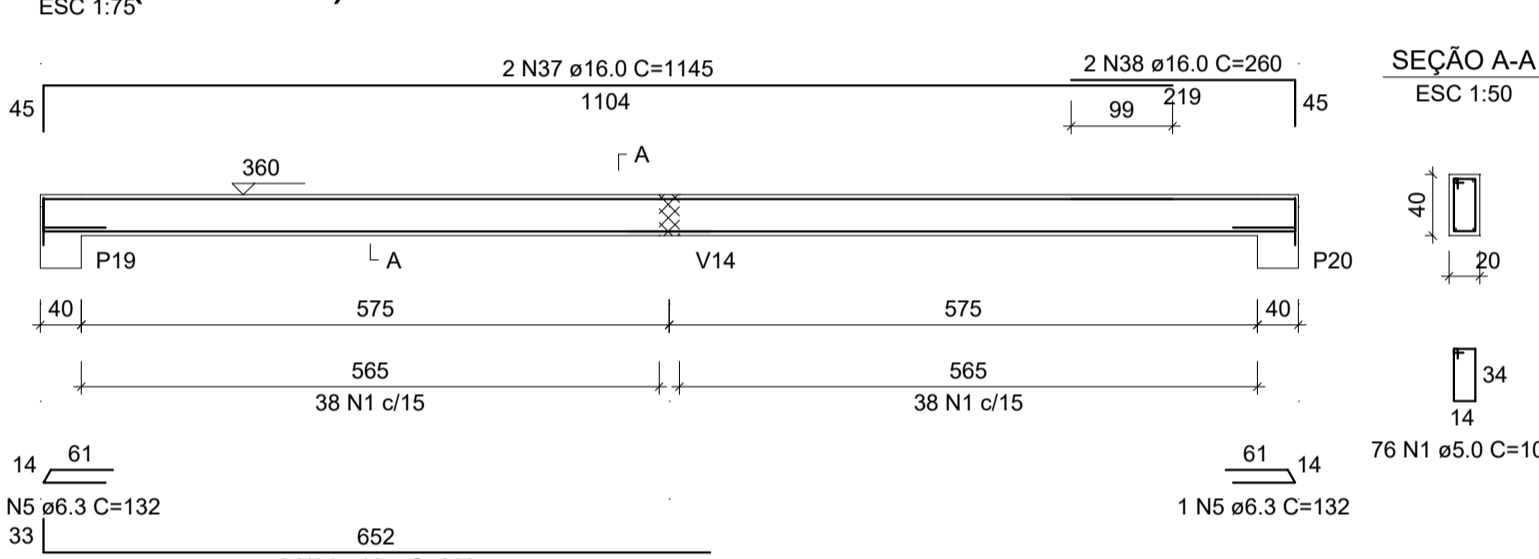
V4 (20 x 40)



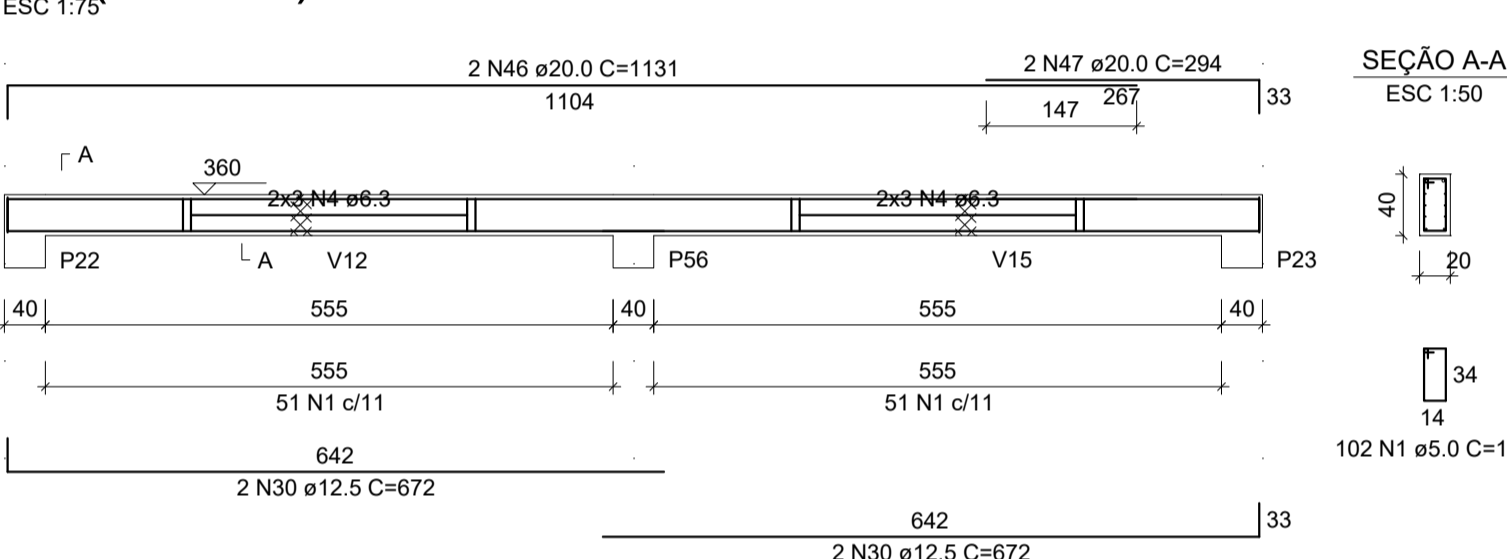
V5 (20 x 40)



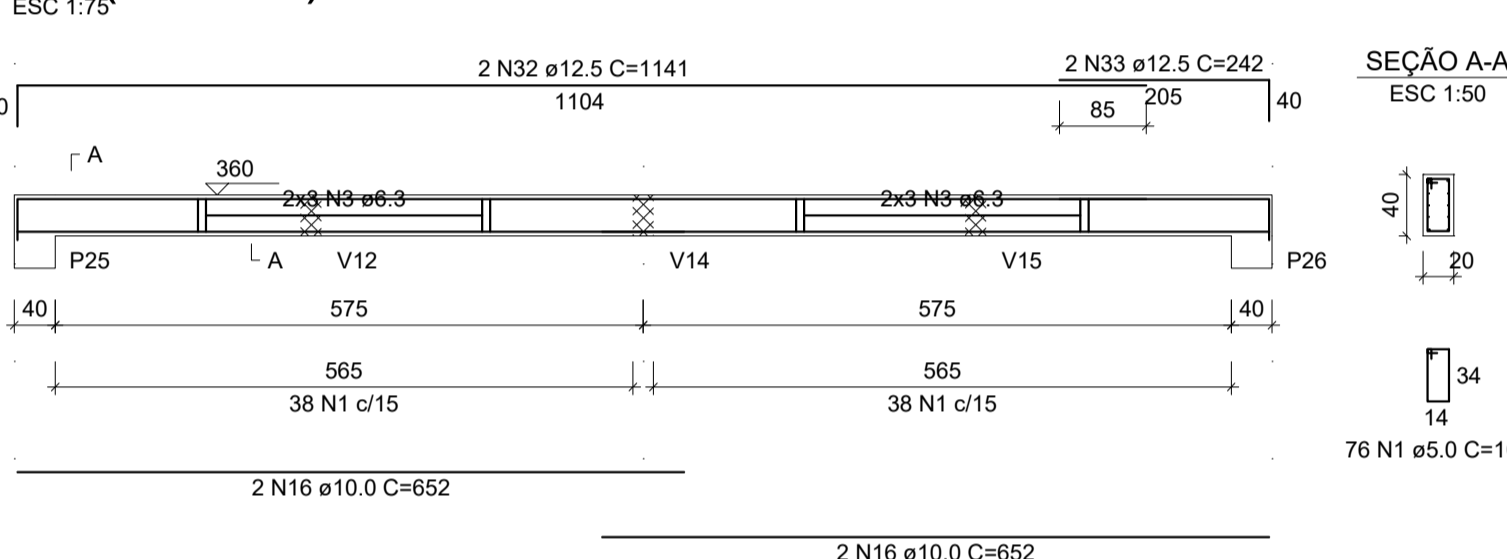
V6 (20 x 40)



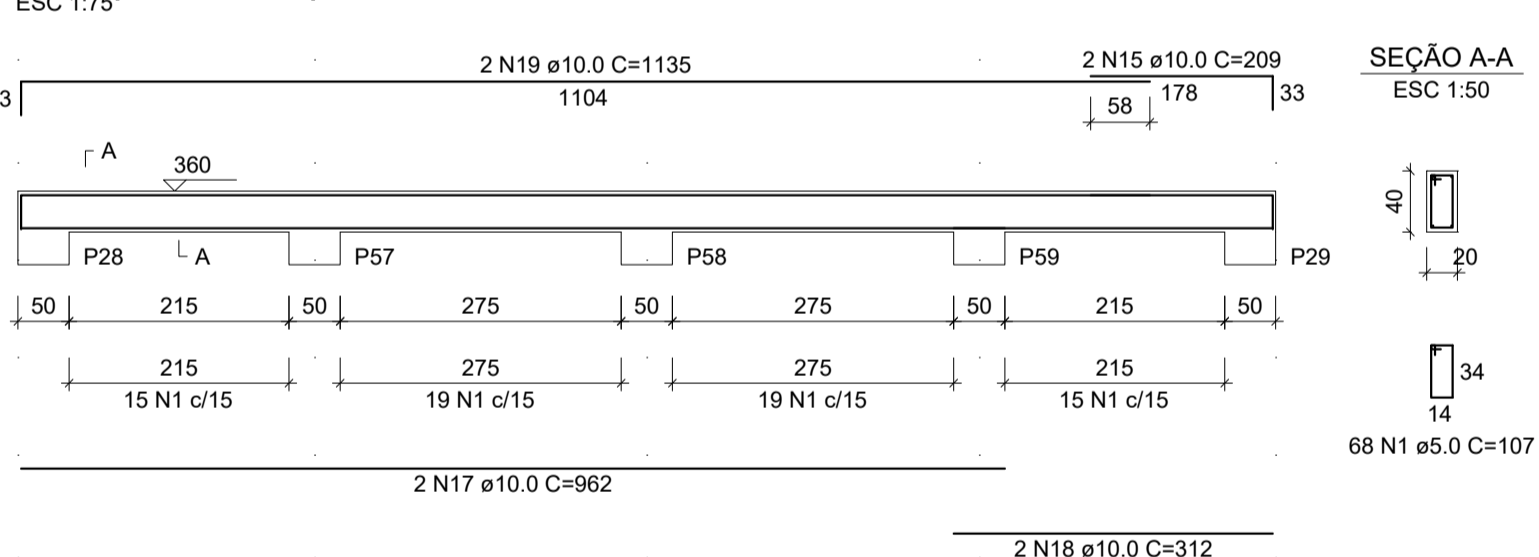
V7 (20 x 40)



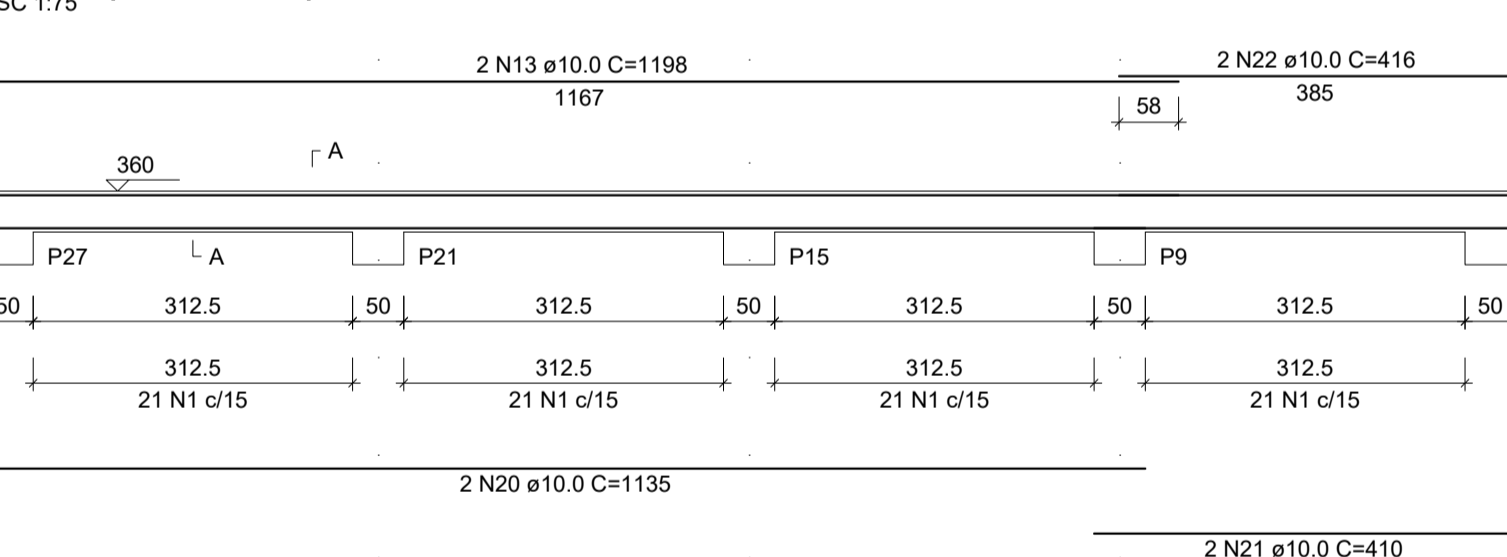
V8 (20 x 40)



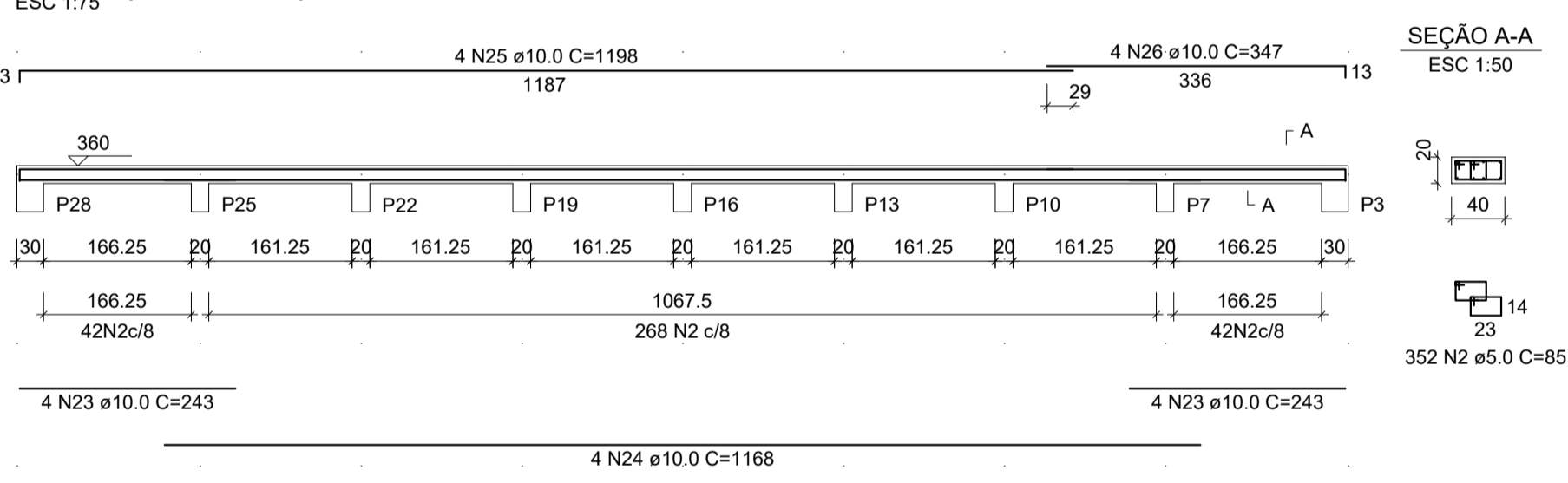
V9 (20 x 40)



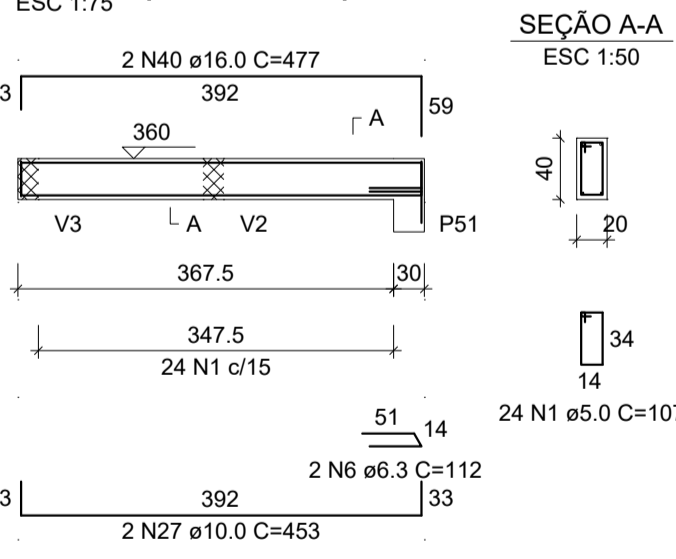
V10 (20 x 40)



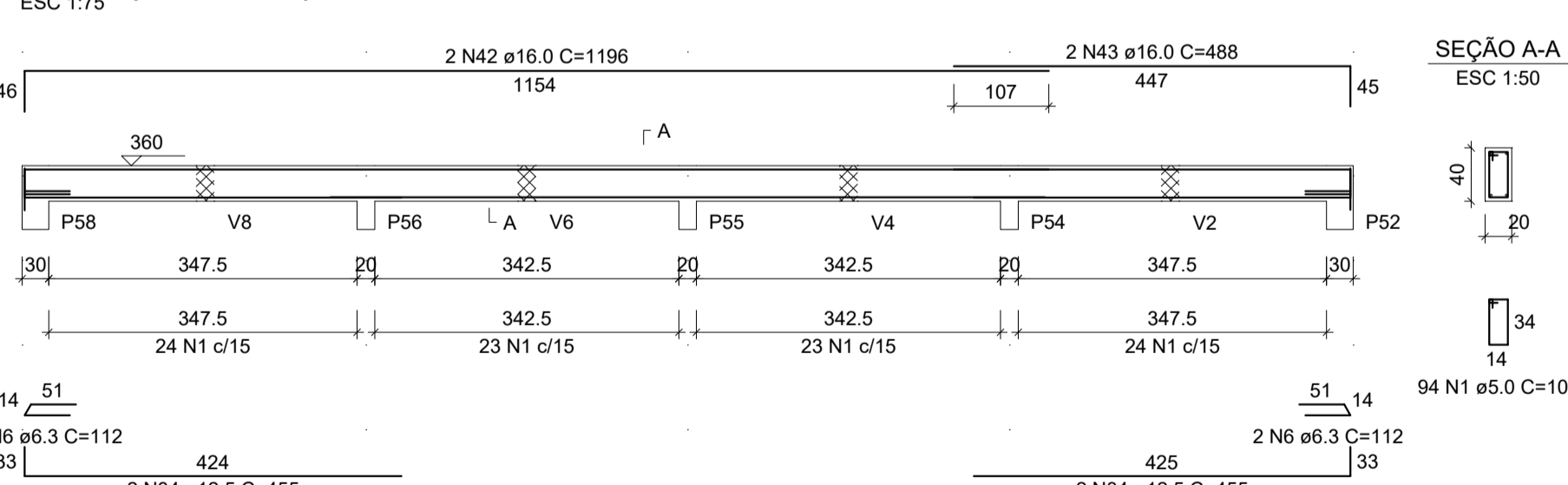
V11 (40 x 20)



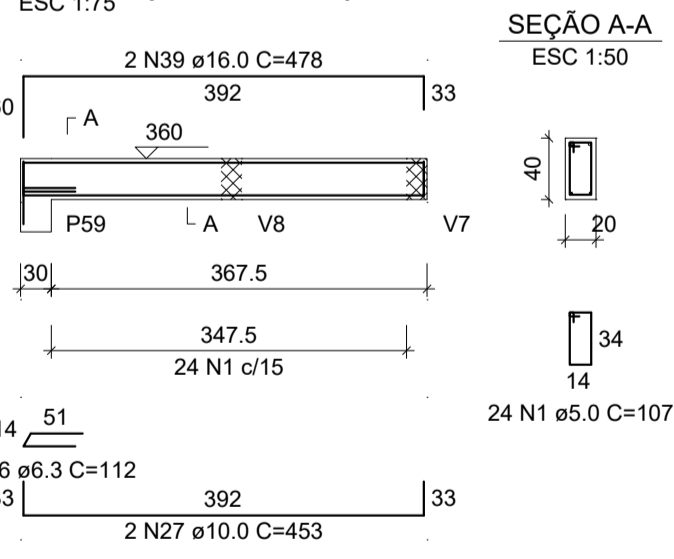
V13 (20 x 40)



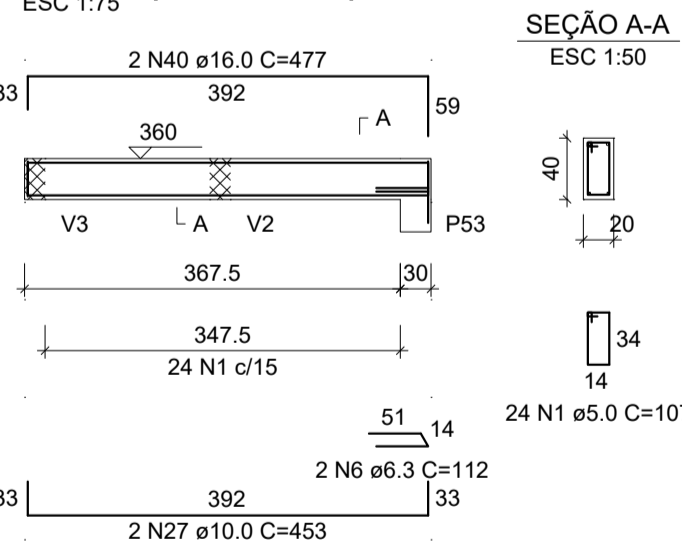
V14 (20 x 40)



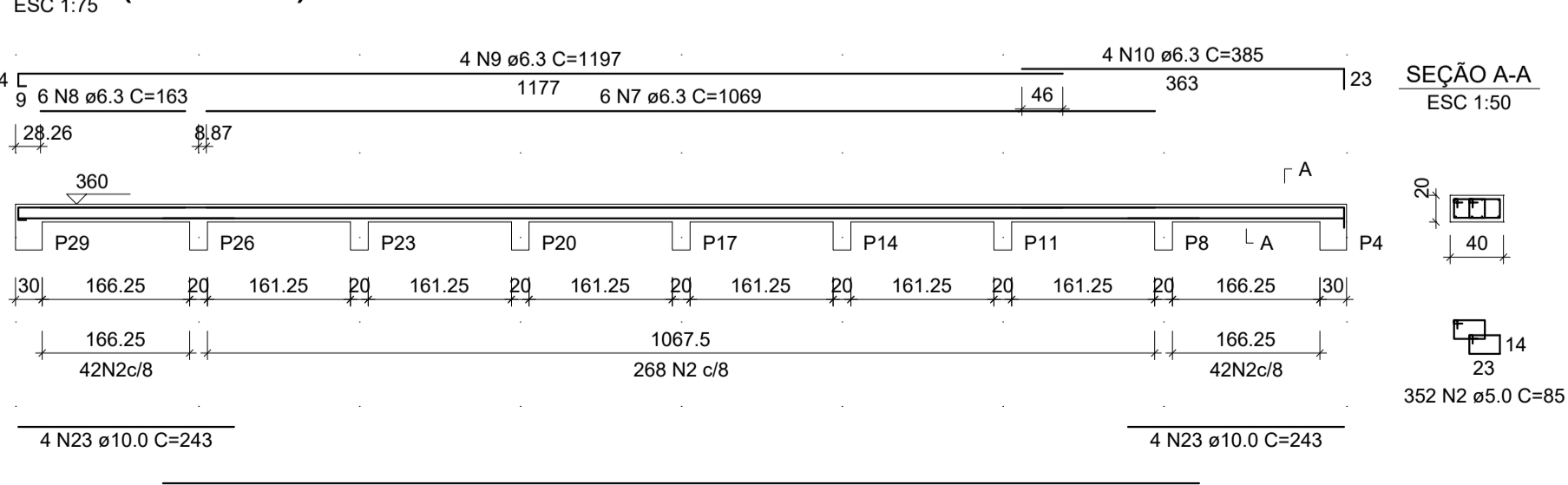
V15 (20 x 40)



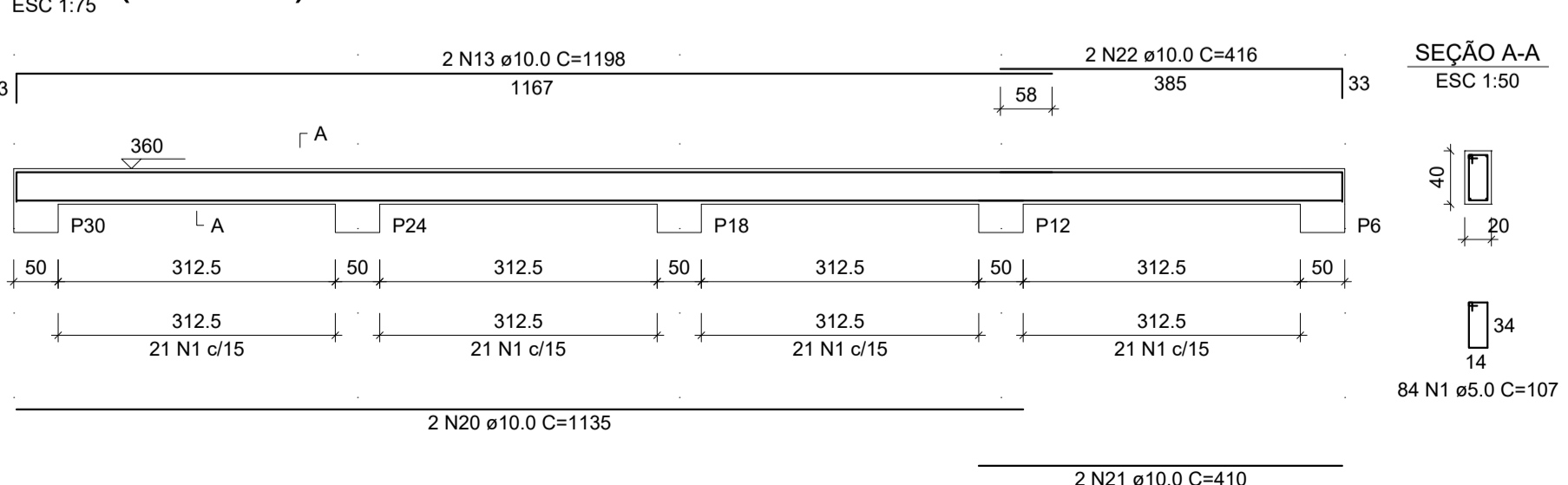
V16 (20 x 40)



V17 (40 x 20)



V18 (20 x 40)



AÇO	N	DIAM (mm)	QUANT	C.UNIT (cm)	C.TOTAL (cm)
V1	1	5.0	1152	107	123264
V4	2	5.0	704	85	59840
V7	3	6.3	24	corr	14856
V10	4	6.3	24	corr	15096
V13	5	6.3	4	132	528
V16	6	6.3	12	112	1344
	7	6.3	6	1069	6414
	8	6.3	6	163	978
	9	6.3	4	1197	4788
	10	6.3	4	385	1540
	11	10.0	4	1102	4408
	12	10.0	4	178	712
	13	10.0	6	1198	7188
	14	10.0	2	1165	2330
	15	10.0	2	209	836
	16	10.0	8	652	5216
	17	10.0	2	962	1924
	18	10.0	2	312	624
	19	10.0	2	1135	2270
	20	10.0	4	1135	4540
	21	10.0	4	410	1640
	22	10.0	4	416	1664
	23	10.0	16	243	3888
	24	10.0	8	1168	9344
	25	10.0	4	1198	4792
	26	10.0	4	347	1388
	27	10.0	8	453	3624
	28	12.5	2	1143	2286
	29	12.5	2	244	488
	30	12.5	12	672	8064
	31	12.5	8	682	5456
	32	12.5	2	1141	2282
	33	12.5	2	242	484
	34	12.5	4	455	1820
	35	16.0	2	1145	2290
	36	16.0	2	258	516
	37	16.0	2	1145	2290
	38	16.0	2	260	520
	39	16.0	4	478	1912
	40	16.0	4	477	1908
	41	16.0	2	805	1610
	42	16.0	2	1196	2392
	43	16.0	2	488	976
	44	20.0	2	1136	2272
	45	20.0	2	299	598
	46	20.0	4	1131	4524
	47	20.0	4	294	1176

AÇO	DIAM (mm)	C.TOTAL (m)	QUANT + 10% (Barras)	PESO + 10% (kg)
CA50	6.3	455.4	42	122.6
	10.0	563.9	52	382.4
	12.5	208.8	20	221.3
	16.0	144.1	14	250.3
	20.0	85.7	8	232.5
CA60	5.0	1831	168	310.4

PESO TOTAL (kg)
CA50 1209
CA60 310.4

Volume de concreto (C-25) = 15.08 m³
Área de forma = 151.65 m²



PREFEITURA MUNICIPAL DE LAJINHA

Obra: Construção de estação para transbordo de resíduos sólidos do Município de Lajinha/MG;

Responsável Técnico: LUCAS HENRIQUE S. PAIVA - CREA-MG: 226.732/D

Proprietário: PREFEITURA MUNICIPAL DE LAJINHA/MG

Endereço: Rodovia MG-108 - Coordenadas Geográficas: 20°12'12.5"S 41°42'43.6"W

Discriminação: ESTRUTURAL EXECUTIVO

Data: MÊS 03/2025 Escala: Indicada Área: 360,00m² Conferência: LUCAS PAIVA

ART. VINCULADA: MG20253818537

CONVÊNIO:

Desenho: Lucas Henrique da Silva Paiva

Folha: 9 de 11